

SUNLIGHT SLTW INTERNATIONAL CO. LTD.

ETS-200

ETS-200_SUS

Instruction

Manual



SUNLIGHT

PREFACE

THANK YOU FOR PURCHASING SUNLIGHT ELECTRIC TROLLEY ETS-200 / ETS-200_SUS

PRODUCT USE:

FOR TRANSPORTING & CARRYING GOODS.

Before using the electric trolley, please read this instruction manual carefully. It is possible to cause injury accidents or cause property damage accidents due to improper operation. Do Not use electric trolley for other purpose than its intended use.

Therefore, for the safety, please read this instruction manual carefully and understand completely.

Please keep this instruction manual on file for future reference. If this is lost, please contact SUNLIGHT or local agent for a new copy.

If you transfer this product to others in the future, please deliver this instruction manual together. SUNLIGHT has the right to change the design of this product, please kindly be informed.



WARNING

(1) USAGE NOTICE

① Do Not overload

The maximum loading of this product is 200 kg.

Please Do Not overload it.

② Follow the charging regulations

- Do Not charge the battery continuously for more than 12 hours.
- Must charge the battery when the battery indicator lights up in red.
- When not in use for a long time, please turn off the power switch but be sure to charge it once a week.
- After using this product, it is recommended to charge it every day when you finished using.

③ Do avoid these behaviors to this product

- Do Not park this product on slope.
- Do Not let children approach, operate, or use this product.
- Do Not wash the electric control system box and motor of this product with water directly.
- Do Not allow other person to stand in front of or behind electric trolley when it is moving.

WARNING

02

(1) USAGE NOTICE

- Do Not put foot near by rolling wheel. Injury could result.
- Do Not use this product for other purpose than its intended use.
- Keep watching the condition of load. Stop operating this product if load become unstable.
- Do Not side or end load. Load must be distributed on at least 80% of table area.
- Do Not use this product with unstable, unbalanced or loosely stacked load.

④ **DO NOT repair and modification without SUNLIGHT's confirmation.**

- If this product needs to be repaired or modified, please contact SUNLIGHT or local agent. If any injury accidents or property damage accidents occur due to self-repair or modification of this product, the user shall bear full responsibility.
- This product all service must be performed by qualified person.

WARNING

(1) USAGE NOTICE

⑤ Original parts

When replacing parts, such as motors, batteries, chargers, differentials, brake systems, electronic control systems, etc., please use the original parts designated by SUNLIGHT. Please Do Not replace the parts that have not been tested and confirmed by SUNLIGHT.

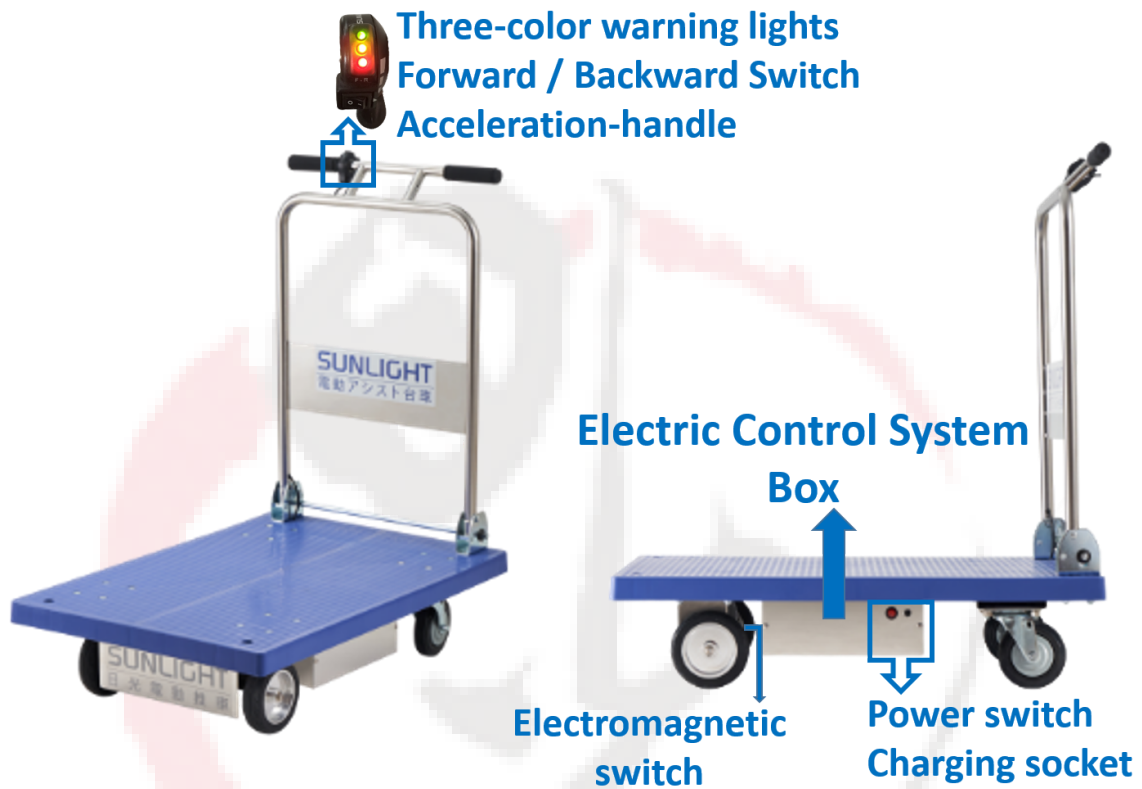
⑥ Precautions related to the battery

- Keep away from sparks caused by short circuit or open circuit of the battery.
- When using, charging, and storing this product, do not let the temperature of the surrounding environment of the battery be below 10°C or above 40°C.

SUNLIGHT

NAME OF PARTS

(1) DETAIL



(2) ACCELERATION-HANDLE INTRODUCTION



NAME OF PARTS

(3) TROUBLESHOOTING ASSISTANCE

Error Code Introduction



◆ Residual battery indicator X : No lights O : Lights up ☀ : Flashing light

	RED	YELLOW	GREEN
> DC 36.3V	X	X	●
DC 33.3V~DC 36.2V	X	●	X
DC 30.3V~DC 33.2V	●	X	X
< DC 30.0V	☀	X	X

Error Code Introduction

◆ System Error (Part1)

X : No lights O : Lights up ☀ : Flashing light

	RED	YELLOW	GREEN
system is not yet turned on	X	X	X
over temperature warning (Over 65°C)	X	●	X
Acceleration-handle disconnected	☀	X	☀
motor sudden unintended acceleration protection	X	☀	☀

NAME OF PARTS

(3) TROUBLESHOOTING ASSISTANCE

Error Code Introduction



◆ System Error (Part2)

X : No lights

O : Lights up

☀ : Flashing light

	RED	YELLOW	GREEN
current overload protection	☀	☀	X
Acceleration-handle is not zeroed	☀	☀	☀

- All SUNLIGHT's products are equipped with a micro-computer self-detect function which can directly understand abnormal conditions from the Error code.
- Users can troubleshoot easily and quickly by themselves, without technical engineer on-site maintenance.
- The design of the acceleration-handle is modularized and with a fool-proof connector design, which is convenient for users to repair and replace themselves.

BATTERY REPLACEMENT

(1) PREPARATION

Please prepare a cross screwdriver, as shown in the photo below.

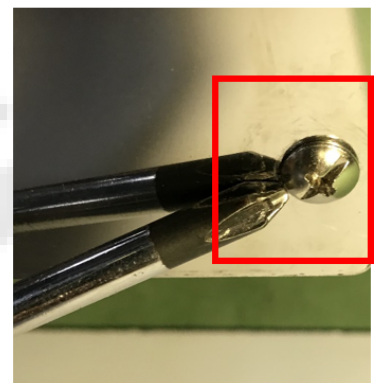


(2) PROCEDURE

- ① Please find the "Electric Control System Box" on the bottom of electric trolley, as shown with **blue words** in the photo below. Then use a cross screwdriver to unscrew the screws at the left side and right side, as shown in the photo below.



**Electric Control System
Box**



BATTERY REPLACEMENT

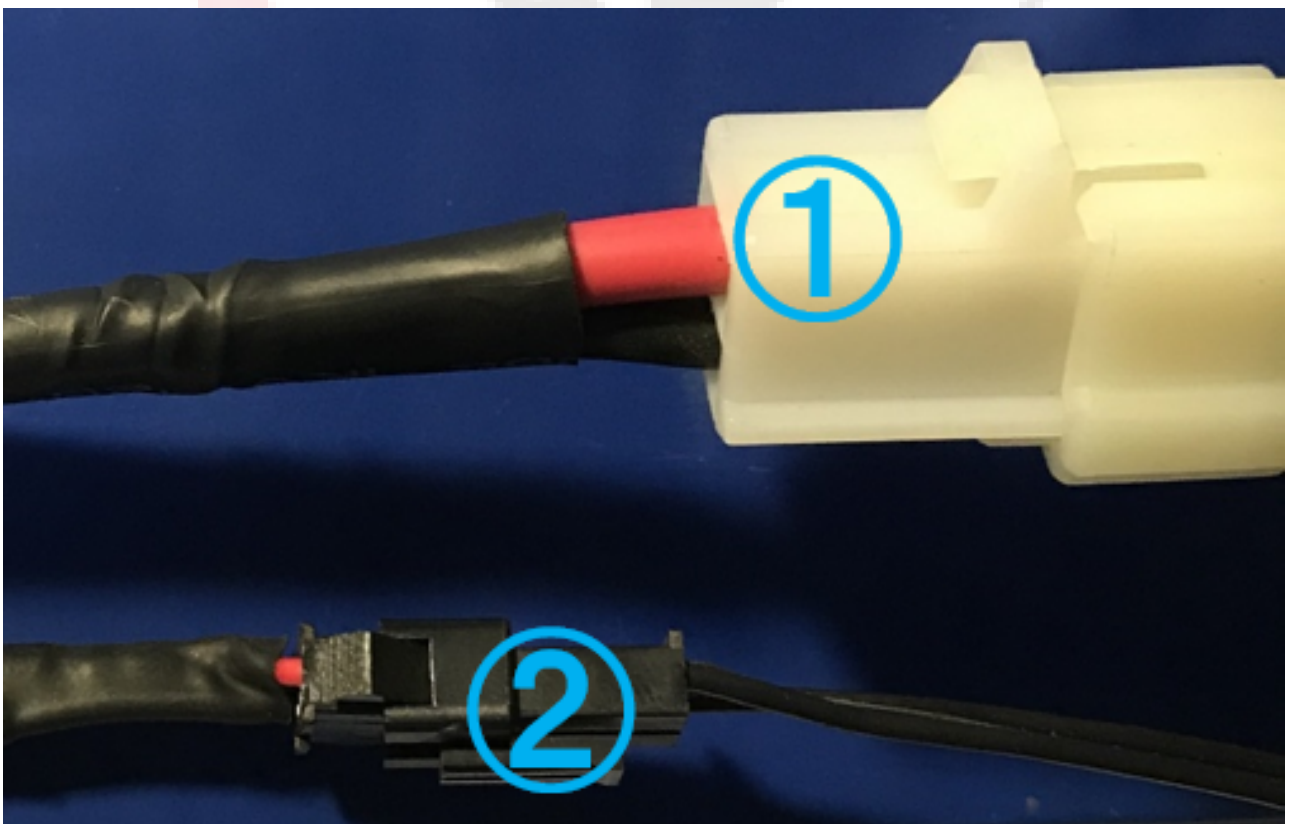
(2) PROCEDURE

② Please follow the sequence of ①② to remove the battery wiring and replace it with a new battery.

Then connect the battery wires according to the sequence of ②① to complete the battery replacement.

【Remark】

- ① is "Battery power supply line"
- ② is "Charging line of charger"



INSPECTION & MAINTENANCE

(1) DAILY CHECKING

Daily checking is effective to find the malfunction or abnormality on electric trolley. Check electric trolley on the following points before operation.

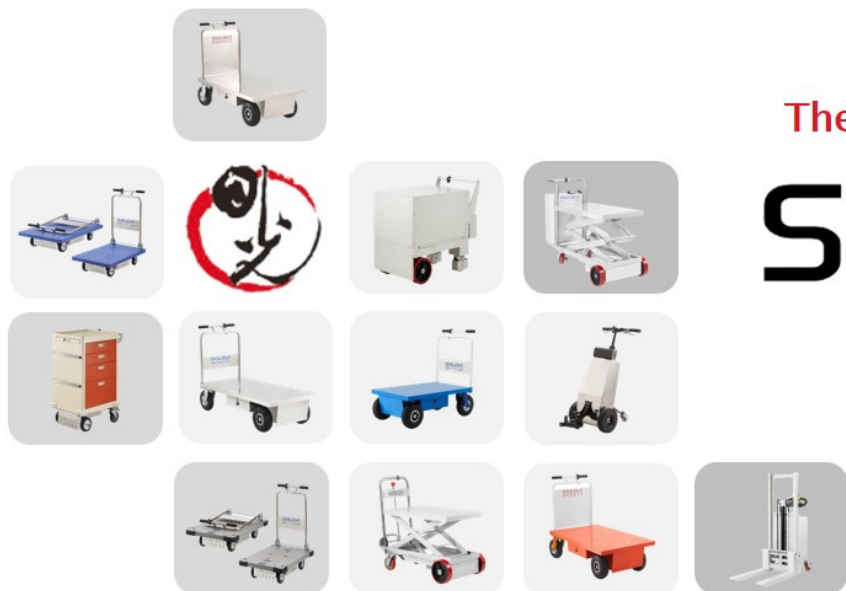
① Inspection

- Check the power indicator light on when turn on.
- Check the electricity sufficient to supply the demand for this time using.
- Check the "acceleration-handle" can work normally.
- Check the "forward/backward switch" can work normally.
- Check the function of brake can work normally.
- Check if all bolts and nuts are tightened firmly.
- Check there is no abnormal sound from the electric control system box, gearbox, and motor.
- Check the smooth movement of all tries/wheels.
- Check all tries/wheels not with cracked, damaged, flat, etc.
- Check the handle of the clutch set to "ON".
- Check there is no broken electric wires by naked eyes.

② Maintenance

- Be sure to charge after using electric trolley every day.
- Please place electric trolley in a well-ventilated place to avoid high temperature and humidity.
- Lubricate with grease the rails where roller moves. Also lubricate the grease nipples (monthly).
- Lubricate all pivoting points and axles (every 6 months).

CONTACT INFO



The Best Electric Trolley in Taiwan

SUNLIGHT

Human Safety

Smart Products

Working Efficiency

MADE IN TAIWAN

SUNLIGHT SLTW INTERNATIONAL CO. LTD.

NO. 2, LN. 76, CHENPING 1ST ST., BEITUN DIST.,
TAICHUNG CITY 406, TAIWAN (R.O.C.)

+886-4-25629962

WWW.SUNLIGHT99.COM.TW

ELECTRIC TROLLEY, COULDN'T BE BETTER!